



FAÇADE CLADDING

System Solutions for Walls

Foreword

If materials limit creativity, what good are they? And, if your design cannot become a reality, then what good is it? If a manufacturer can't provide sound technical advisement on their products, what good are they?

RHEINZINK offers a solution to all of the above. RHEINZINK is known as one of the industry's most reliable and trusted brands for roofing and façade cladding. Our customers are supported by unparalleled customer service and technical assistance.

Along with our partners, we offer unique solutions for virtually every design. A comprehensive range of RHEINZINK facade and roofing products, along with diverse installation techniques, facilitate solutions for every project.

RHEINZINK's aesthetic is timeless. Additionally, requirements for sustainable building using natural materials are met without difficulty. RHEINZINK is low-to-no maintenance and can last for generations.

The examples in this brochure illustrate some of the design possibilities when utilizing RHEINZINK.

RHEINZINK reserves the right to make changes or adjustments based on research and development.

For questions pertaining to any system, please contact our Technical Department.

Woburn, January 2024





Private Residence, Sagaponack, NY



*Harriet Tubman Visitor's Center,
Cambridge, MD*



Glidewell Investments, Missoula, MT

RHEINZINK-Flat-Lock Tiles

The overlapping seams of the Flat Lock Tile System provide a subtle gridded look to simple, complex rectilinear or curvilinear facades. Using various sized tiles, and changing the layout of the seam lines facilitates many design options.

- Individual tile sizes
- Perfect for curvilinear surfaces
- Can be installed horizontally, vertically or diagonally



Fig. Cover Page: Pier 17, New York, New York

Fig. Left: Edmonton Control Tower, Edmonton, Alberta, Canada



Yarm School, Yarm, Great Britain



SUNY Cortland, Cortland, NY

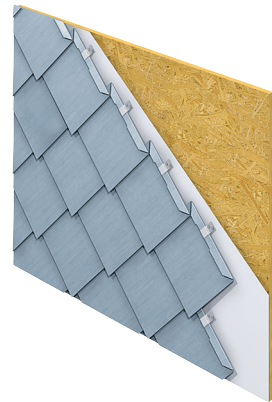


Nelson Mandela Metro University,
Faculty of Engineering, Port Elizabeth,
South Africa

RHEINZINK-Pointed Tiles

Diamond and square-shaped tiles make up the RHEINZINK pointed tile group. These tiles have hems in place to form simple, lock joints. The natural flexibility and format of these tiles permit aesthetically pleasing solutions that accommodate virtually all corners and curves.

- Perfect for complex curves
- Available in various sizes
- Flexible adaptation to building shapes





Lecture Theatres, Johannesburg University, Johannesburg, South Africa



Menlyn Maine Shopping Centre, Pretoria, South Africa



The Green Man, London, Great Britain

RHEINZINK-Standing Seam Panels

The RHEINZINK-Angled Standing Seam System, commonly used on facades, exhibits strong linear shadows produced by its angled seam configuration. The widespread availability of standing seam fabrication machines ensures consistent forming of panel edges as well as closing of the seams. Differing panel lengths and widths make it possible to achieve even the most complicated geometries. The angled standing seam system can be oriented horizontally, vertically and diagonally.

- Suitable for most building types
- Accommodates complicated geometries
- Can be installed horizontally, vertically or diagonally





Caprivi-Lounge, Osnabrück, Germany



Hall Office Park, Frisco, TX



North Richland Hills Recreation Center,
North Richland Hills, TX

RHEINZINK-Horizontal Panel System

One benefit of a reveal panel system is the choice of face heights of up to 10" and variable joint widths from 0-1". Panel end joints can be configured to create vertical joints or can be staggered with backer plates, allowing the horizontal joints to be emphasized. Combining horizontal and vertical panels create a striking design. The possibilities are endless. Installation of this system is done from top to bottom.

- Variable joint widths from 0-1"
- Face heights up to 10"
- Horizontal facade segmentation

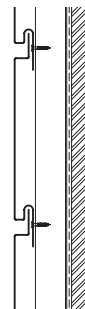
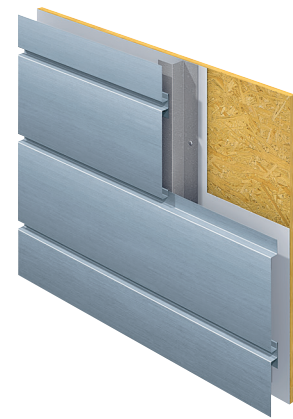
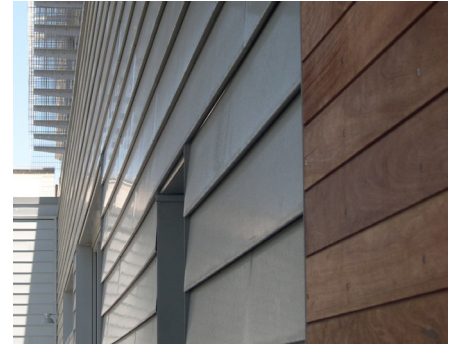


Fig. Right: Private residence, Holderness, NH





Housing Co-op, Duisburg, Germany



Signature Airport, Boston, MA

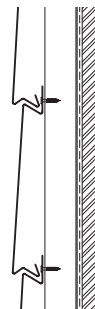
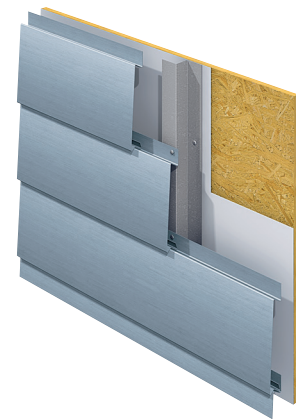


MG AVU Galerie, Prague, Czech Republic

RHEINZINK-Shiplap Panel

Due to its layered characteristics, the shiplap panel is unique cladding, reminiscent of wooden façades. When exposed to light and shade, sharp contours appear because of its profile geometry. Contrary to the horizontal and vertical reveal panels, this system does not have any reveals.

- Layered panel look
- Horizontal installation
- Scalloped design





Seychelles, Santa Monica, CA



Office Building, Australia



Building, The Netherlands

RHEINZINK-Vertical Reveal Panels

The vertical reveal panels have a choice of face width of up to 13" and a variable reveal width ranging from 0-1". With the flexibility of vertical and horizontal installation, the reveal panel offers the designer an exceptional amount of freedom in implementing their ideas. Solutions may be executed quickly when it comes to renovations or retrofitting installations.

- Variable joint widths from 0-1"
- Face widths up to 13"
- Vertical facade segmentation





Private Residence, Berlin, Germany



Multisport Complex, Walferdange, Luxembourg

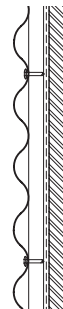
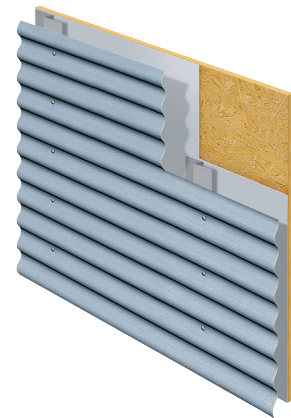


Private Residence, Datteln, Germany

RHEINZINK-Corrugated Sinusoidal Profiles

The sinusoidal profile is a “wavy” corrugated and is available with either exposed or concealed fasteners. From a design point of view, the sinusoidal panels are characterized by the slight exchange of light and shadow, which will vary depending on the corrugation height. This system may be installed horizontally, vertically or diagonally.

- **Can be installed horizontally, vertically and diagonally**
- **Available with exposed or concealed fasteners**
- **Clad large areas with ease**





Verbier Gondola Station, Verbier, Switzerland



Rosenberg School, Neuhausen, Switzerland

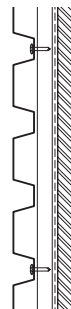


Verbier Gondola Station, Verbier, Switzerland

RHEINZINK-Corrugated Trapezoidal Profiles

Commonly known as the “box” corrugated, this system offers ease of installation and may be arranged horizontally, vertically or diagonally. When compared to the sinusoidal corrugated, trapezoidal profiles are characterized by having a more robust exchange of light and shadow.

- Can be installed horizontally, vertically and diagonally
- Available with exposed or concealed fasteners
- Clad large areas with ease





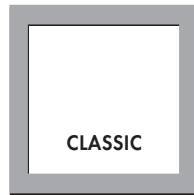
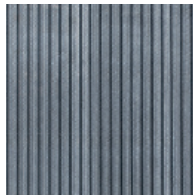
**ONE BRAND –
5 PRODUCT LINES**

**THE PERFECT
SOLUTION
FOR EVERY
REQUIREMENT**

bright rolled

RHEINZINK-CLASSIC

*ORIGINAL.
EXPRESSIVE.
PATINATES OVER TIME.*

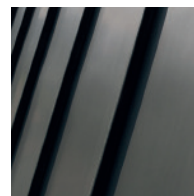


TITANIUM ZINC BRIGHT ROLLED:
PATINATES OVER THE YEARS. NATU-
RAL, VARIABLE SURFACE CHARACTER.

blue-grey
graphite-grey

RHEINZINK-prePATINA

*PRE-WEATHERED.
SELF-HEALING.
NATURAL.*

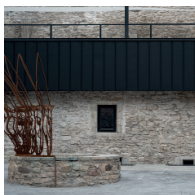
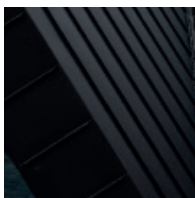
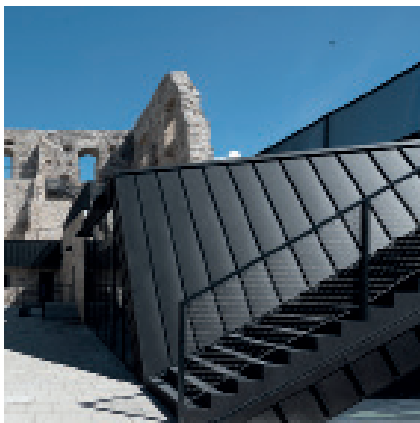


THE ONLY NATURALLY PRE-WEA-
THERED SURFACE IN THE WORLD.
ZINC TYPICAL PATINA EX WORKS.
100% NATURAL, 100% RECYCLABLE.

- skygrey
- basalte

RHEINZINK-GRANUM

NOBLE.
MATTE FINISH.
MULTIFACETED.

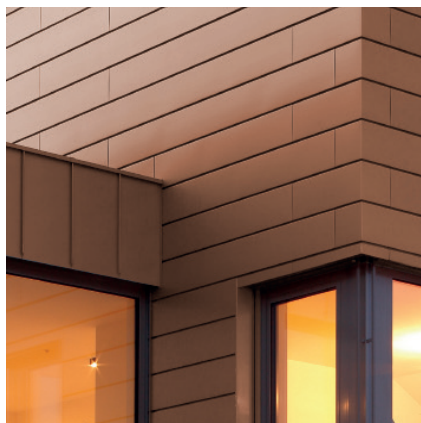
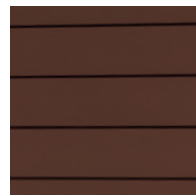
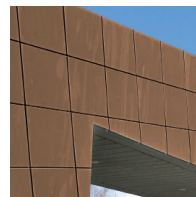


SKYGREY AND BASALTE. PURE, GREY ELEGANCE. URBAN DESIGN. PHOSPHATED SURFACE WITH COUNTLESS DESIGN OPPORTUNITIES.

- gold
- brown
- blue
- red
- green
- black

RHEINZINK-PRISMO

GLAZED.
DYNAMIC.
ADAPTABLE.



AESTHETIC, HARMONIOUS MATCH WITH ITS SURROUNDINGS. SUBTLE COLOUR VARIETY FOR A UNIQUE LOOK. SEMI-TRANSPARENT.



RHEINZINK America, Inc.
18 Commerce Way #1250
Woburn, MA 01801
USA

Tel.: +1 781 729 0812
Fax: +1 781 729 0813

info@rheinink.com
www.rheinink.us